

TENDER BULLETIN

NO.28 OF 2018/19 FY

12 OCTOBER 2018



LIMPOPO

PROVINCIAL GOVERNMENT
REPUBLIC OF SOUTH AFRICA

Bid documents may also be obtained for free from:

www.etenders.gov.za

Provincial Supply Chain Management Office

TABLE OF CONTENTS

	Page No.
1. REPORTING FRAUDULENT AND CORRUPT ACTIVITIES.....	03
2. INSTRUCTIONS.....	04
3. BID INVITATIONS FOR SUPPLIES, SERVICES AND DISPOSALS	05--06
AWARDED	07
5. SPECIAL NOTICES.....	08--09
ANNEXURE 1: ADDRESS LIST AND CONTACT DETAILS: PROVINCIAL DEPARTMENTS.....	10
ANNEXURE 2: ADDRESS LIST AND CONTACT DETAILS: PUBLIC ENTITIES.....	11
ANNEXURE 3: ADDRESS LIST AND CONTACT DETAILS: PROVINCIAL TREASURY TENDER ADVISE CENTRES	12
ANNEXURE 4: ADDRESS LIST AND CONTACT DETAILS: SATELLITE OFFICES	13
7. SELF REGISTRATION PROCESS.....	14

REPORT

FRAUDULENT & CORRUPT ACTIVITIES ON GOVERNMENT PROCUREMENT SYSTEM

National Anti-Corruption @ 0800 701 701

Security and Investigating Services – Limpopo Provincial Treasury @ 015 298 7196

ALL COMPLAINTS/CONCERNS RELATED TO SCM NON-COMPLIANCE MUST BE REPORTED TO:

LIMPOPO PROVINCIAL TREASURY

PRIVATE BAG X 9486

POLOKWANE

0700

PROVINCIAL TREASURY, FINANCE HOUSE, 56 – 58 PAUL KRUGER STREET, POLOKWANE

2. INSTRUCTIONS

1. Bidders are advised to read the entire tender bulletin.
2. Tenders for procurement of supplies, services and disposals are categorized as follows:

SUPPLIES

- Accommodation, leasing of
- Audio visual equipment
- Building material
- Chemicals: Agricultural/Forestry/
- Laboratory/Water Care
- Clothing/Textiles
- Computer equipment
- Computer software
- Electrical equipment
- Electronic equipment
- Furniture
- General
- Medical
- Office equipment: Labour-saving devices
- Perishable provisions
- Stationary/printing
- Steel
- Timber
- Vehicle (all types)
- Workshop equipment

SERVICES

- Building
- Civil
- Electrical
- Functional (including cleaning-, and security services)
- General
- Maintenance of electrical, mechanical equipment and plumbing
- Mechanical
- Professional
- Repair and maintenance of vehicles
- Transport

DISPOSALS

- Clothing and textiles
- Furniture
- General
- Scrap metal
- Vehicles

3. Bid documents are generally available in English only.
4. The address where a bid document is available from and where it must be submitted to may differ.
5. The addresses at which bid documents may be obtained and to which tenders must be posted, appear in Annexure 1.
6. The address list of various Supply Chain Management Advice Centres at which bid documents and tender bulletins may also be obtained, appear in Annexure 3; and
7. The address list of Supply Chain Management satellite offices at which tender bulletins may also be obtained, appear in Annexure 4.

3. BID INVITATIONS FOR SUPPLIES, SERVICES AND DISPOSALS

BID NO.	DESCRIPTION OF SERVICE OR SUPPLIES	CONTACT DETAILS	BID DOCUMENT PRICE (NON-REFUNDABLE)	DUE AT 11H00	BID DOCUMENTS OBTAINABLE FROM	POST OR DELIVER BIDS TO
					See Annexure 1 & 2, Page 11 & 12	

EDET 242/18	<p>Appointment of an accredited Symantec Service Provider to procure and renew semantic security Solution for a period of twelve months</p> <p>COMPULSORY BRIEFING: -</p> <p>Date: 26/10/2018 Venue: 19 Biccard Street Polokwane Evridiki Toweres (ground floor Court room) Time: 10H00</p> <p>Department of Economic Development, Environment & Tourism</p>	<p>ADMINISTRATION PROCESS Linda Mothutsi@ 015 293 8766 or Ms. VL Sthavhakhomu @ 015 293 8662</p> <p>TECHNICAL ASPECTS Mr.NT Masilane @ 082 8075258</p>	R85-00	06/11/2018	109	109
ACDP 18/15	<p>Construction of Matsika Banana Packing House Project, at Ha- Matsika in the Thulamela Municipality in Vhembe District of Limpopo Province CIDB 6 CE or Higher</p> <p>Bidders who are QSEs are targeted for this tender</p>	<p>ADMINISTRATION PROCESS NM Mononyane @ Tel: 015 294 3434 or Email:mononyanenm@agric.limpopo.gov.za</p> <p>TECHNICAL ASPECTS Mr. TD Ramakgapola @ 015 963 2005/ 074 626 6169 or</p>	R350-00	12/11/2018	111	111

LIMPOPO PROVINCIAL TENDER BULLETIN NO 28 OF 2018/19 FY, 12 OCTOBER 2018

	<p>COMPULSORY BRIEFING SESSION: -</p> <p>Date: 24/10/2018 Time:10H00 Venue: Matsika/Thusalushaka Co-operative are as follows: - Travel on R524 from Thohoyandou Circle Past Thavhani Mall and Travel for 21km, and turn left and travel for 4.7km, North after 4.7km turn right and travel for 4.7km, East to Matsika Irrigation Scheme Offices. Follow the signposts towards the farm. The farm turn off is at the following GPS co-ordinate S25°51'34.29"; E30°41'46.11".</p> <p>Department of Agriculture</p>	<p>Email; Ramakgapolatd@agric.limpopo.gov.za or Mr. DG Wessels @ 015 294 3000/082 857 7180 or Email:wesselsdg@agric.limpopo.gov.za</p>				
PRDP 80/2017	<p>Implementation and Impact Evaluation of the Load Control Programmes (Overloading Control Measures) in Limpopo Province</p> <p>COMPULSORY BRIEFING: -</p> <p>Date: 01/11/2018 Venue: Old Cabinet Boardroom 40 Hans van Rensburg Street, Polokwane, Limpopo Province Time: 11H00</p> <p>Office of the Premier</p>	<p>ADMINISTRATION PROCESS S.Maepa @ 015 287 6000</p> <p>TECHNICAL ASPECTS Tenders@premier.limpopo.gov.za</p>	R85-00	13/11/2018	102	102

4. AWARDED BIDS

OFFICE OF THE PREMIER

BID NO	DESCRIPTION	SUCCESSFUL BIDDER	AMOUNT	TOTAL POINTS ATTAINED
PRDP 15/2017	Customer Satisfactory Survey	Mthente Reasearch & Consulting Service (Pty) Ltd	R1 632 035-60	92.00

7.

5. SPECIAL NOTICE

LIMPOPO PROVINCIAL TREASURY

**5.1 (SCM ADVICE CENTERS):
ADVERTISEMENTS OF LIMPOPO CSD CALL CENTRE LINES FOR SUPPLIERS**

LIMPOPO CSD CALL CENTRE LINES FOR SUPPLIERS

DISTRICT	CALL CENTRE NUMBER	OFFICIAL RESPONSIBLE	TIME
Head Office	015 291 2684	Mr.Muthivhi MC	07H30 TO 16H30
Mopani	015 812 0256	Ms. Nxumalo P	07H30 TO 16H30
Sekhukhune	013 265 1071	Mrs Morena MM	07H30 TO 16H30
Vhembe	015 962 0014	Mrs. Nefolovhodwe MQ	07H30 TO 16H30
Waterberg	014 717 1376	Mrs. Tsatsi AT	07H30 TO 16H30

5.2 ADVERTISEMENT OF WORKSHOPS/ROADSHOWS AS PER DISTRICT: -

CAPRICORN SUPPLY CHAIN MANAGEMENT ADVICE CENTRE

(Centralized Supplier Database Roadshow program)

DATE	MUNICIPALITY	VENUE	TARGET	TIME
18/10/2018	Polokwane	Ga-Makgato Tribal Authority	SUPPLIERS	10H00

For more information, please contact Ms Masindi MM at Tel. 015 291 8424

SEKHUKHUNE SUPPLY CHAIN MANAGEMENT ADVICE CENTRE

(Centralized Supplier Database Roadshow program)

DATE	MUNICIPALITY	VENUE	TARGET	TIME
25/10/2018	Makhuduthamaga	Ga-Masemola	SUPPLIERS	10H00

For more information, please contact Mr Sehale M S at Tel. 013 265 1344

VHEMBE SUPPLY CHAIN MANAGEMENT ADVICE CENTRE

MOPANI SUPPLY CHAIN MANAGEMENT ADVICE CENTRE

(Centralized Supplier Database Roadshow program)

DATE	MUNICIPALITY	VENUE	TARGET	TIME
18/10/2018	Greater Letaba	Modjadji Tribal Authority	SUPPLIERS	10H00
25/10/2018	Maruleng	Sekororo Tribal Authority	SUPPLIERS ROADSHOW	10H00

For more information, please contact Mr. Mbedzi MB at Tel. 015 812 0149

WATERBERG SUPPLY CHAIN MANAGEMENT ADVICE CENTRE

LIMPOPO PROVINCIAL TENDER BULLETIN NO 28 OF 2018/19 FY, 12 OCTOBER 2018

(Centralized Supplier Database Roadshow program)

DATE	MUNICIPALITY	VENUE	TARGET	TIME
18/10/2018	Mogalakwena	Mapela Tribal Authorities	SUPPLIERS	10H00

LIMPOPO PROVINCIAL TENDER BULLETIN NO 28 OF 2018/19 FY, 12 OCTOBER 2018

ANNEXURE 1: ADDRESS LIST AND CONTACT DETAILS: LIMPOPO PROVINCIAL DEPARTMENTS

UNIQUE REF. NO.	BID DOCUMENT REFERENCE	CONTACT DETAILS	DOCUMENTS SOLD AT:	DOCUMENTS DEPOSITED AT
100	DSDP	Tel: 015 293 6000 Fax: 015 293 6211 Website: www.limpopo.gov.za	Department of Social Development , Office No. 57 Ground Floor, 21 Biccadd Street POLOKWANE	Deposited in the box located at Department of Social Development, 21 Biccadd Street Polokwane
101	LPT	Tel: 015 298 7000 Fax: 015 295 7010 Website: www.limpopo.gov.za	Provincial Treasury 46 Hans Van Rensburg Street, POLOKWANE and all Provincial Treasury Tender Advice Centres	Deposited in the bid box located outside a guard house at Ismini Towers, 46 Hans Van Rensburg Street, Polokwane
101A	TC/LP	Tel: 015 291 8400 Fax: 015 295 3310 Website: www.limpopo.gov.za	Provincial Treasury 56 – 58 Paul Kruger Street, POLOKWANE and all Provincial Treasury Tender Advice Centres	Deposited in the bid box located in the main entrance, Finance House Building, 56-58 Paul Kruger Street, Polokwane
102	PRDP	Tel: 015 287 6000 Fax: 015 295 3840 Website: www.limpopo.gov.za	Office of the Premier , 40 Hans van Rensburg Street, POLOKWANE and all SCM Advice Centres	Deposited in the bid box located at Mowaneng Building, 40 Hans van Rensburg Street, Polokwane
103	HEDP	Tel: 015 293 6000 Fax: 015 293 6211 Website: www.limpopo.gov.za	Department of Health , Office No. D3 Ground Floor, Old Capricorn Building, 18 College Street, POLOKWANE and all Provincial Treasury Tender Advice Centres	Deposited in the box located at Department of Health and Social Development, 18 College Street, Polokwane
104	LPEDT	Tel: 015 290 7600/1 Fax: 015 297 4494 Website: www.limpopo.gov.za	Department of Education , Corner 113 Biccadd and 24 Excelsior Streets, POLOKWANE and all Provincial Treasury Tender Advice Centres	Deposited in the bid box located in the main entrance of corner 113 Biccadd Street and Excelsior Street, Polokwane
105	PUDP	Tel: 015 295 1000 Fax: 015 295 1163 Website: www.limpopo.gov.za	Department of Roads & Transport , 40 Paul Kruger Street, POLOKWANE and all Provincial Treasury Tender Advice Centres	Deposited in the bid box located at 1 st Floor, Paul Kruger Wing, 40 Paul Kruger Street, Polokwane
106	DSSL	Tel: 015 290 2900 Fax: 015 291 4452 Website: www.limpopo.gov.za	Department of Safety, Security and Liaison , 32 Schoeman Street, POLOKWANE and all Provincial Treasury Tender Advice Centres	Deposited in the bid box located in the main entrance of 32 Schoeman Street, Polokwane
107	COGHSTA	Tel: 015 294 2000 Fax: 015 295 4190 Website: www.limpopo.gov.za	Department of Co-Operative Governance, Human Settlements & Traditional Affairs , 28 Market Street, Office No. G 74, Ground Floor, Polokwane.	Deposited in the bid box located at Hensa Towers, Cnr of Rabe and Landdros Mare Streets, Polokwane
108	DSAC	Tel: 015 284 4000 Fax: 015 284 4514 Website: www.limpopo.gov.za	Department of Sport, Arts and Culture Olympic Towers, Corner Rabe and Biccadd Street, POLOKWANE and all Provincial Treasury Tender Advice Centre	Deposited in the bid box located in the main entrance of Olympic Towers, Corner 21 Rabe and Biccadd Street, Polokwane
109	LEDET	Tel: 015 293 8300 Fax: 015 293 8319 Website: www.limpopo.gov.za	Department of Economic Development, Environment & Tourism , 90 Bok Street, POLOKWANE and all SCM Advice Centres	Deposited in the bid box located in the main entrance of Evridiki Towers, 19 Biccadd Street, Polokwane
110	LDPW & WODP	Tel: 015 284 7000 Fax: 015 284 7031 Website: www.limpopo.gov.za	Department of Public Works, Roads and Infrastructure ; Towers, 43 Church Street, POLOKWANE and all Provincial Treasury Tender Advice Centres	Deposited in the bid box located at Corner Blaawberg and River Street Ladanna Polokwane 0699 Private Bag X9490 Polokwane 0700
111	ACDP	Tel: 015 294 3000/30/60/90/20 Fax: 015 294 4506 Website: www.limpopo.gov.za	Department of Agriculture , Temo Towers, 69 Biccadd Street, POLOKWANE and all Provincial Treasury Tender Advice Centres	Deposited in the bid box located in the main entrance of AgriVillage, 69 Biccadd Street, Polokwane

LIMPOPO PROVINCIAL TENDER BULLETIN NO 28 OF 2018/19 FY, 12 OCTOBER 2018

ANNEXURE 2: ADDRESS LIST AND CONTACT DETAILS: LIMPOPO PUBLIC ENTITIES

UNIQUE REF. NO.	BID DOCUMENT REFERENCE	CONTACT DETAILS	DOCUMENTS SOLD AT:	DOCUMENTS DEPOSITED AT
112	RFB: LIMP	Tel: 015 293 3621 Fax: 015 293 3660 Website: www.golimpopo.co	State Information Technology Agency (SITA) Limpopo Office, Moolman Building, 27 Market Street, POLOKWANE, 0699	Bid box located in the Main Entrance of Moolman Building, 27 Market Street, Polokwane
113	LTA	Tel: 015 293 3600 Fax: 015 293 3655 Website: www.golimpopo.com	Limpopo Tourism Agency , ERF 92/688, Portion 2 Southern Gateway, Ext 4, N1 Main Road, Polokwane 0699	Bid box located in the offices ERF 92/688, Portion 2 Southern Gateway, Ext 4, N1 Main Road, Polokwane 0699
114	LGB	Tel: 015 295 5581 Fax: 015 295 3566 Website: www.lgb.org	Limpopo Gambling Board , 22 Schoeman Street, POLOKWANE, from 08H30 to 16H00	Bid box located in the main entrance, ground floor, 22 Schoeman Street, Polokwane
115	LEDA	Tel: 015 633 4700 Fax: 015 633 4854 Website: www.leda.co.za	Limpopo Economic Development Agency Enterprise Development Finance, Main Road Lebowakgomo	Bid box located in the main entrance, Enterprise Development Finance, Main Road Lebowakgomo
116	RAL	Tel: 015 284 4600 Fax: 015 284 4701 Website: www.ral.co.za	Road Agency Limpopo (RAL) , RAL Towers, 26 Rabe Street, POLOKWANE, 0700	Bid box located in the entrance foyer (ground floor) of RAL Towers, at 26 Rabe Street, Polokwane
117	GAAL	Tel: 015 288 0122 Fax: 015 288 0346 Website: www.gaal.co.za	Gateway Airports Authority Limited , N1 Road to Louis Trichardt, Army Base, POLOKWANE International Airport, Polokwane, 0700	Bid box located in the main entrance, ground floor of administration building, Polokwane International Airport, Army Base
118	VIVET	Tel: 015 963 3156 Fax: 015 963 3154 Website: www.fetcol@mweb.co.za	Vhembe FET College , Stand No. 203, Unit A, Sibasa, 0970, Limpopo Province	Vhembe Fet College, Central Office, Private Bag X2136, SIBASA 0970
119	WTVET	Tel: 015 491 8581/8602 Fax: 015 491 8579 Website: www.procurement@waterbergcollege.co.za	Waterberg FET College , Central Office, 36 Hooqe Street Street, Mokopane, 0600	Waterberg FET College , Central Office, 36 Hooqe Street Street, Mokopane, Private Bag x 2449, Mokopane 0600
120	GTN	Tel. 015 291 2641 Fax. 015 291 2648	No. 130 Marshall Street, Polokwane.0700	Great North Transport No. 130 Marshall Street, Polokwane.0700
121	IDT	Dineo lekoloane @ Tel: 015 295 0000 Fax: 015 295 6559 Email: dineol@idt.org.za	22 Hans van Rensburg Street Polokwane 0700	Independent Development Trust P O Box 55386 POLOKWANE 0700

ANNEXURE 3: ADDRESS LIST AND CONTACT DETAILS: PROVINCIAL TREASURY TENDER ADVICE CENTRES

(Tender bulletins and bid documents are obtainable from the following Centers):

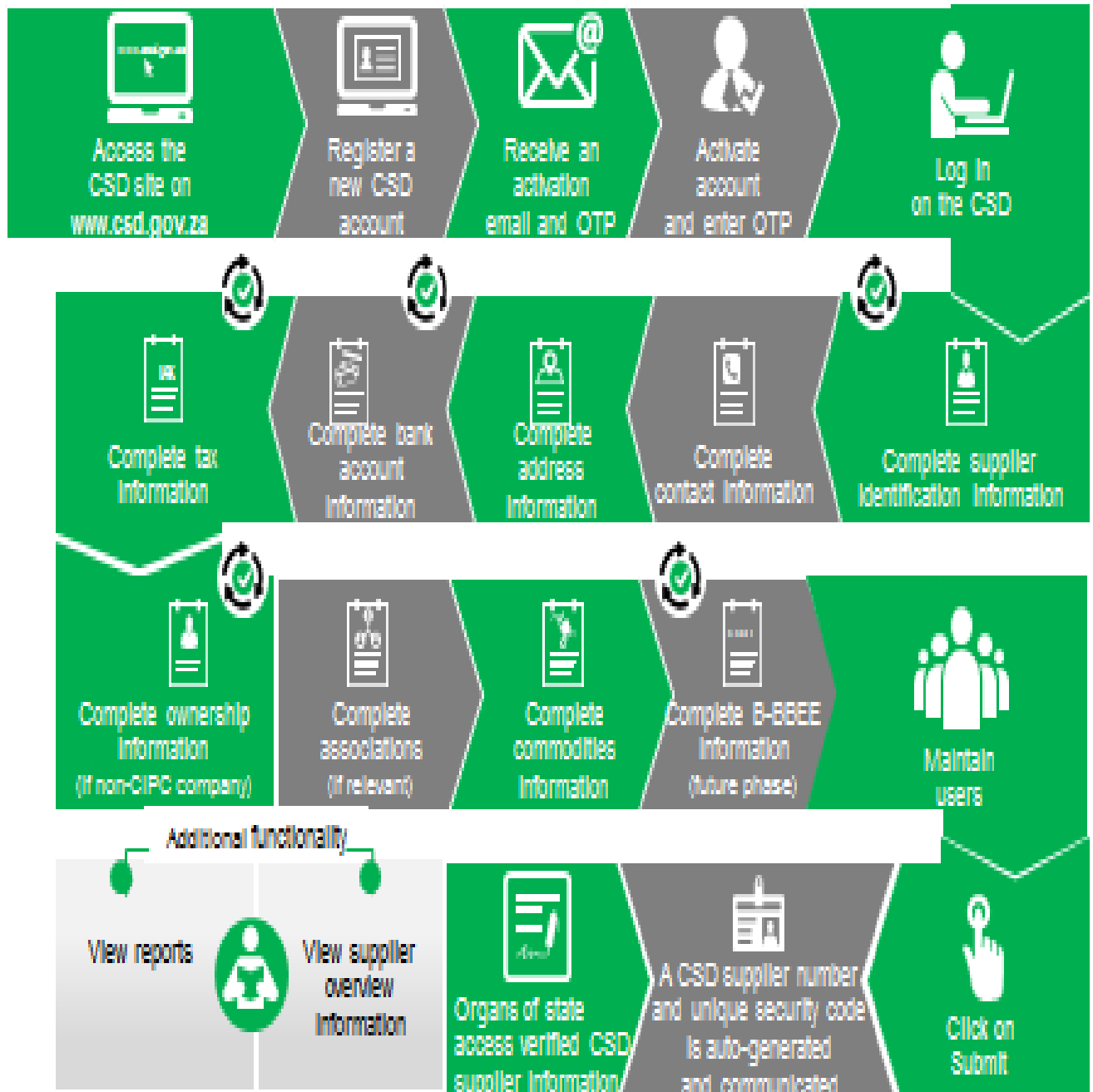
PROVINCIAL TREASURY SUPPLY CHAIN MANAGEMENT ADVICE CENTRES	
<p>HEAD OFFICE</p> <p>Provincial Supply Chain Management Office 56 – 58 Paul Kruger Street POLOKWANE Private Bag x9494 POLOKWANE, 0700 Tel No. (015) 291 8400</p> <p>Contact: Ms. M.B Rakubu @ Tel: 015 291 8717/6</p>	<p>Capricorn SCM Advice Centre</p> <p>Limpopo Provincial Treasury 56-58 Paul Kruger Street Private Bag x9494 POLOKWANE, 0700 Tel No. (015) 291 8400</p> <p>Contact Person: Ms. M.M. Masindi</p>
<p>Vhembe SCM Advice Centre</p> <p>Limpopo Provincial Treasury Government Building Complex BLOCK E GROUND FLOOR THOHOYANDOU, VENDA Tel: (015) 962 1752 Fax: (015) 962 1282</p> <p>Contact Person: Ms. A Manena</p>	<p>Mopani SCM Advice Centre</p> <p>Limpopo Provincial Treasury Private Bag X 1973 GIYANI, 0826 Tel: (015) 812 0149 Fax: 086 219 7905</p> <p>Contact Person: Mr. M. B. Mbedzi</p>
<p>Waterberg SCM Advice Centre</p> <p>Limpopo Provincial Treasury 98 Nelson Mandela Street Decimale Building MODIMOLLE Tel: (014) 717 5837 Fax: (014) 717 5670</p> <p>Contact Person: Mrs.Tsatsi AT</p>	<p>Sekhukhune SCM Advice Centre</p> <p>Limpopo Provincial Treasury Lefa Centre, Schoonoord Road JANE FURSE Tel: (013) 265 1344 Fax: (013) 265 1354</p> <p>Contact Person: Mr. M. S. Sehale</p>

ANNEXURE 4: ADDRESS LIST AND CONTACT DETAILS: SATELLITE OFFICES

(Tender bulletins are also obtainable from the following centers)

<p>LIBSA Thabazimbi No.08 Riet Bok Street, Thabazimbi, WATERBERG Tel. No. (014) 772 2437</p>	<p>LIBSA Lephalale No. 3A Venter Street, Lephalale, WATERBERG Tel. No. (014) 763 2834</p>
--	---

Supplier Self-Registration Process



Auto verification of supplier information with SARS, GIPC etc